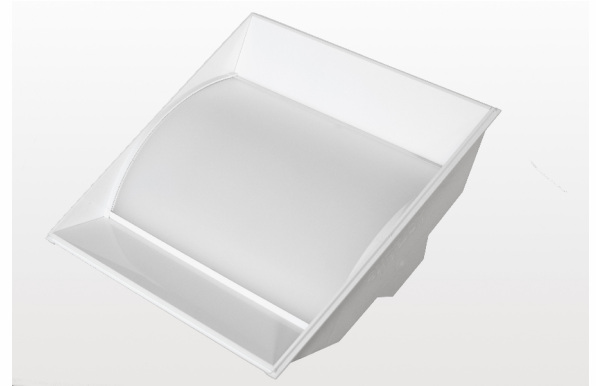


AcraLite LED Lighting

The AcraLite 2' Ceiling troffer, produces 4,730 lumens of quality light
 Designed for offices, schools, retail locations and hospitals
 Fits standard suspended ceilings with 1" or 5/8" rails



FEATURES

- Light weight Aluminium with powder coated finish.
- Rugged polycarbonate end plates.
- High performance polycarbonate diffuser provides even light distribution.
- Fixture is LM80 rated to deliver over 200,000 service hours.
- Color Temperature 4000K or 5000K other color temperatures available upon request.
- Energy efficient design provides high light output with minimum power consumption.
- Superior thermal management allows for continuous, cool operation at full output.
- Optional Night Light uses the fixture as a low output light for safety purposes Utilizing less than 7 watts of power.
- Long life maintenance free.
- 5-year limited warranty.

SPECIFICATIONS

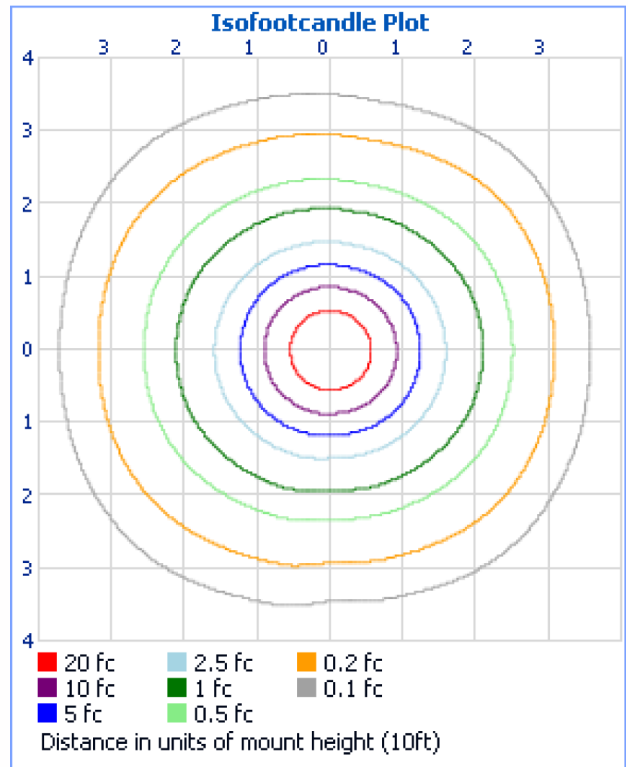
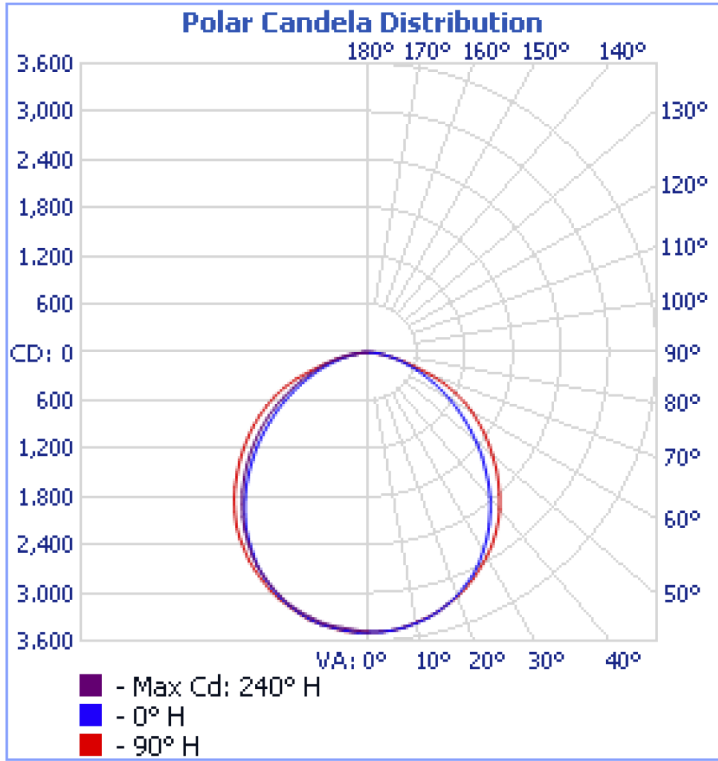
Dimensions: 23.9"(L) x 4.9"(H) x 23.9"(W)

Weight: 6 lbs

Power Requirements	Part numbers	With Night Light
43 WATTS INPUT POWER 0.36 AMPS @ 120 VAC 50/60HZ 0.20 AMPS @ 220 VAC 50/60HZ 0.16 AMPS @ 277 VAC 50/60HZ POWER FACTOR: > .93 THD : .11/16.5 CRI* 85.5	AL22CT-HO-5.0K AL22CT-HO-4.0K AL22CT-SO-5.0K AL22CT-SO-4.0K	AL22CT-HO-5.0K-N AL22CT-HO-4.0K-N AL22CT-SO-5.0K-N AL22CT-SO-4.0K-N

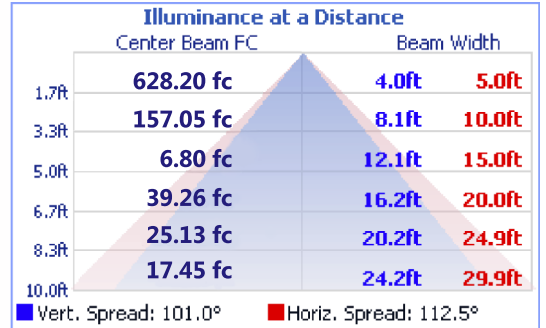
AL22CT-HO-5.0K

The following images depict the luminous intensity distribution characteristics of the luminaire.



Coefficients Of Utilization - Zonal Cavity Method

RCC %:	80				70				50		
RW %:	70	50	30	0	70	50	30	0	50	30	20
RCR: 0	1.19	1.19	1.19	1.19	1.16	1.16	1.16	1.00	1.11	1.11	1.11
1	1.09	1.05	1.00	.97	1.06	1.02	.99	.85	.98	.95	.92
2	1.00	.91	.85	.79	.97	.90	.84	.72	.86	.81	.77
3	.91	.81	.73	.66	.88	.79	.72	.62	.76	.70	.64
4	.83	.72	.63	.56	.81	.70	.62	.53	.68	.61	.55
5	.77	.64	.55	.49	.75	.63	.55	.47	.61	.53	.48
6	.71	.58	.49	.42	.69	.57	.48	.41	.55	.47	.42
7	.66	.52	.44	.38	.64	.52	.43	.36	.50	.43	.37
8	.61	.48	.39	.34	.60	.47	.39	.33	.46	.38	.33
9	.57	.44	.36	.30	.56	.43	.35	.30	.42	.35	.30
10	.54	.41	.33	.27	.52	.40	.32	.27	.39	.32	.27



Zonal Lumen Summary

Zone	Lumens	% Lamp / Luminaire
0 - 60	1352.40	78.40%
60 - 90	2204.0	20.50%
0 - 90	3808.60	98.90%
90 - 180	887.10	1.10%
0 - 180	4695.70	100%

Dimensions

Specifications

Length: 23.9"
Depth: 4.9"
Width: 23.9"

