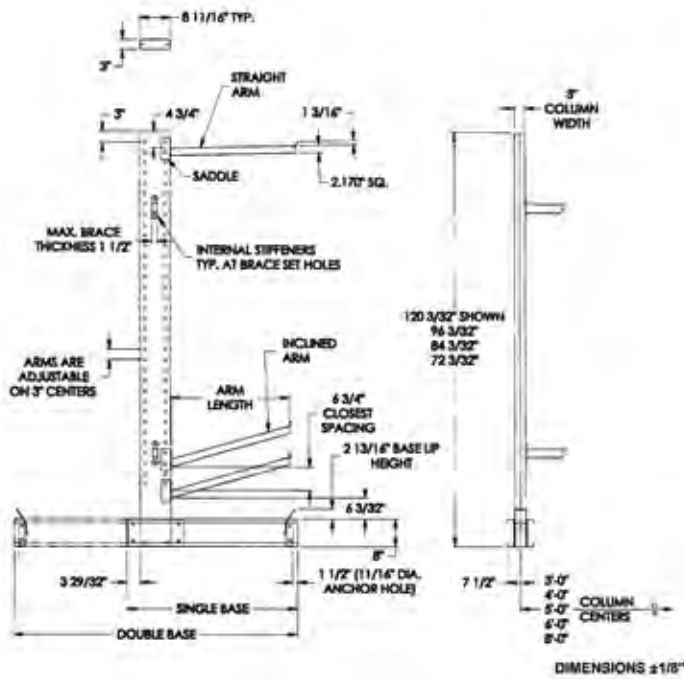
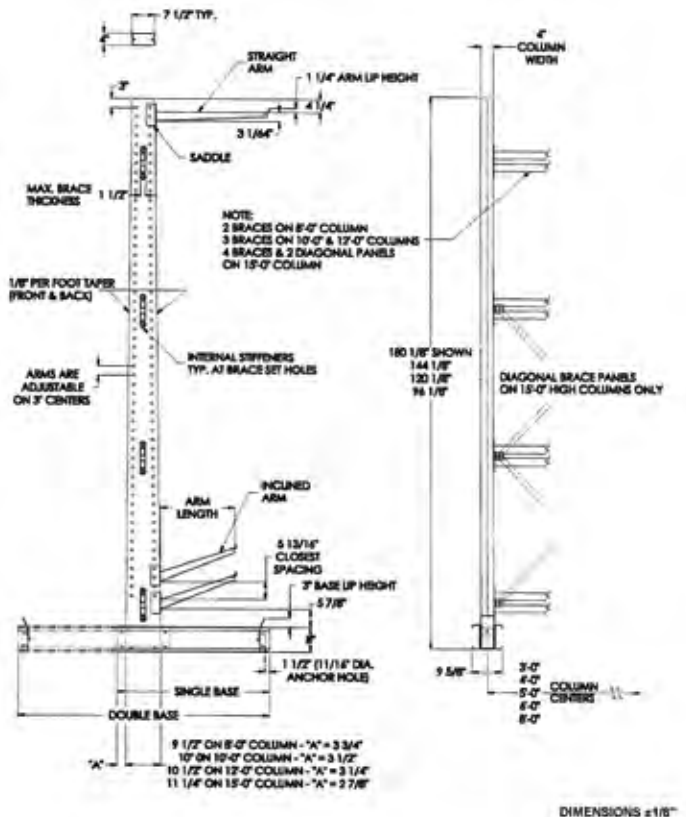


Steeltree® Series



Steeltree® Series O8
Column Details



Steeltree® Series 25
Column Details

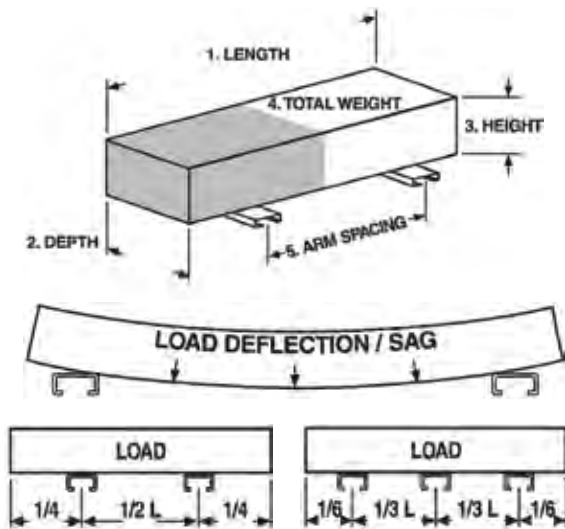
Cantilever Racks Selection Guide

Define the Load

1. Length: _____
2. Depth: _____
3. Height: _____
4. Weight: _____
5. Horizontal Arm Spacing: _____

Load Deflection-Determine the Number of Uprights

Load deflection is characterized as the sagging of the load between the arms. Space blocks on the floor at an equal distance apart under the load until you have no sagging. Each block represents one arm. The arm will be connected to the upright to support the load.



For safe loads with two-arm support distance between arms should be $\frac{1}{2}$ the load and length.

Three arm support should be $\frac{1}{3}$ the load and length.

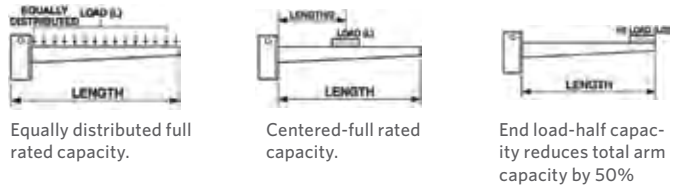
Arm Selection

1. Divide the total weight by the number of arms, as required.
2. Match the load capacity required with the appropriate arm length and select proper arm from table. Arm length should equal load depth.



Arm Loading

All capacities are based on uniformly distributed load.



Column Capability

Do not exceed column capacities. Count the number of arms to be used on column; find arm capacity on spec sheet and multiply by number of arms per column.

Typical Cantilever Loading Pattern

Load weights must be evenly distributed over number of arms used to support it. The overhang should equal $\frac{1}{2}$ the column spacing. This will assure even loading on all arms.

